

Project: “Wetlands in Sápmi”

Anna-Marja Persson
The Saami Council
05.10.2023





Malå and Vittangi Reindeer Herding Communities

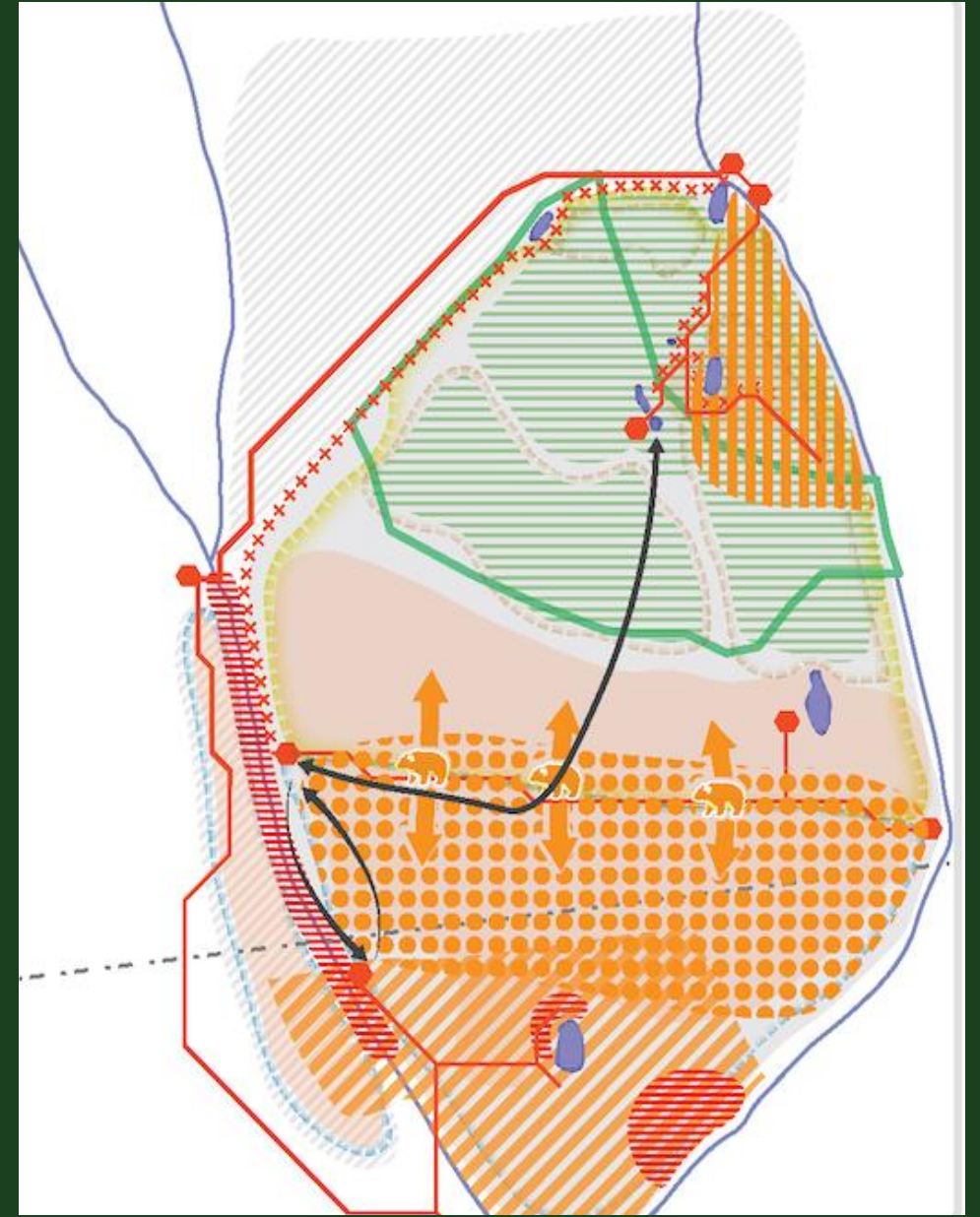
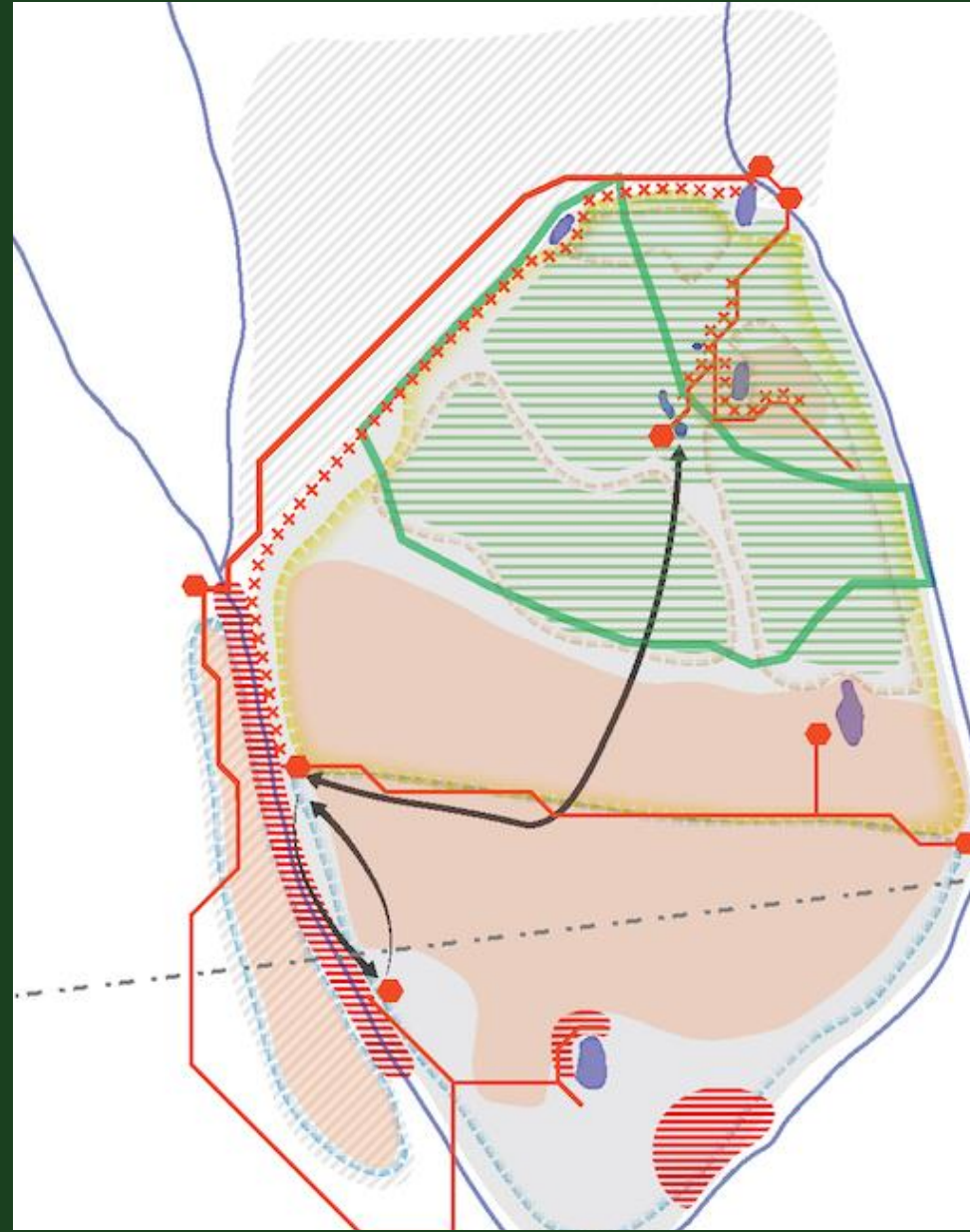
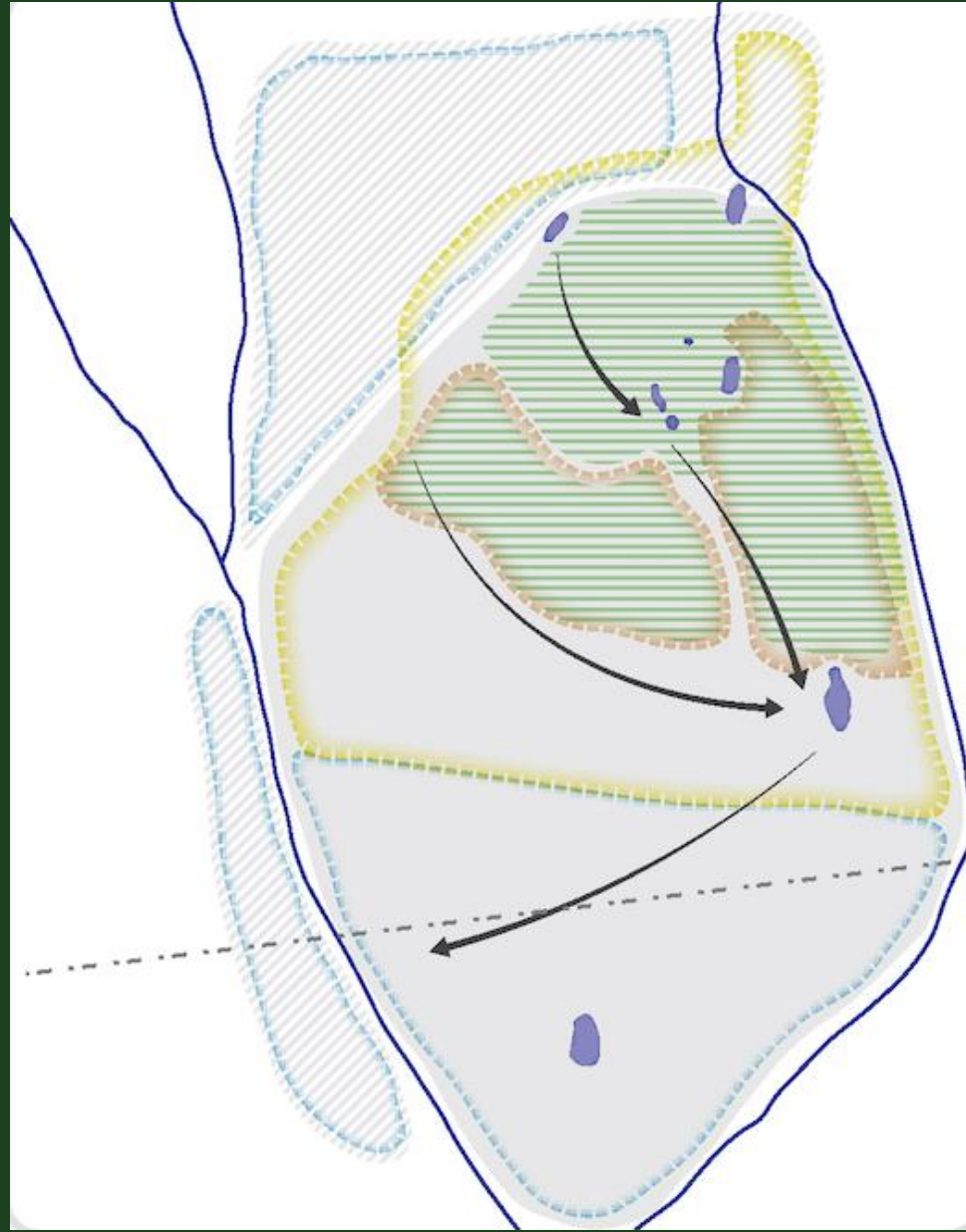
Two very important things with this project!

1. It is co-produced
2. Based on Sámi Knowledge

METHOD: Topographical participatory mapping

- Map 1: Earlier land use
- Map 2: Changes in the land
- Map 3: Threats





What can this be used to?

- Documentation
- Communication
 - Internally: transfer knowledge
 - Externally: in consultations, etc.



Picture: Jörgen Stenberg

Thank you very much for your attention!

annamarja.persson@saamicouncil.net