

Local Communities and Indigenous Peoples Platform: Pacific Regional Gathering

17 October 2023

The Executive Committee of the Warsaw
International Mechanism for Loss and Damage



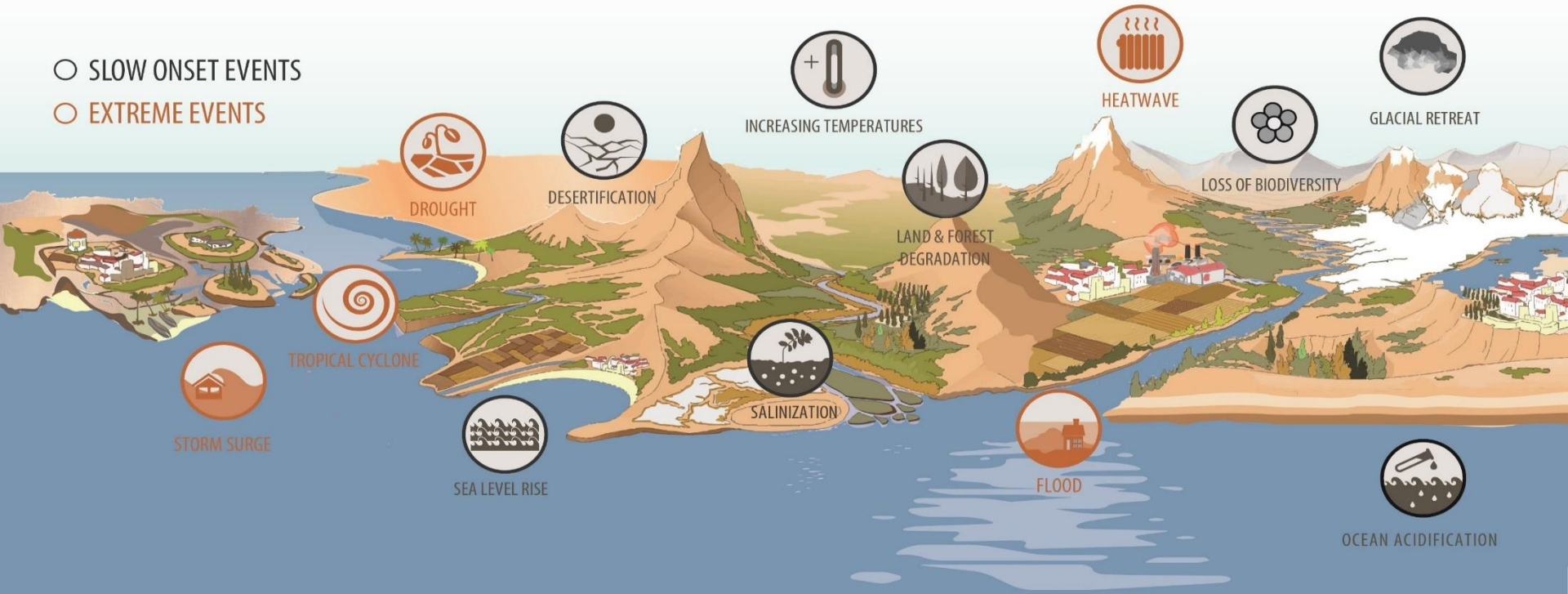


United Nations
Framework Convention on
Climate Change

LOSS AND DAMAGE ASSOCIATED WITH THE IMPACTS OF CLIMATE CHANGE

○ SLOW ONSET EVENTS

○ EXTREME EVENTS



ECONOMIC LOSSES

INCOME



BUSINESS OPERATIONS



AGRICULTURAL PRODUCTION



TOURISM

PHYSICAL ASSETS



INFRASTRUCTURE



PROPERTY



NON-ECONOMIC LOSSES

INDIVIDUALS



LIFE



HEALTH



HUMAN MOBILITY

SOCIETY



TERRITORY



CULTURAL HERITAGE



INDIGENOUS KNOWLEDGE



SOCIETAL/
CULTURAL IDENTITY

ENVIRONMENT



BIODIVERSITY



ECOSYSTEM SERVICES



Warsaw International Mechanism — Functions

Averting, minimizing and addressing loss and damage associated with impacts of climate change in developing countries by undertaking the following functions:



Enhancing knowledge and understanding of comprehensive risk management approaches



Strengthening dialogue, coordination, coherence and synergies among relevant stakeholders



Enhancing action and support, including, finance, technology and capacity-building

Executive Committee guides the implementation of the functions of the Warsaw International Mechanism for Loss and Damage



Warsaw International Mechanism — expert groups



EXPERT GROUPS OF EXCOM

Task Force on
Displacement

Technical Expert
Group on
Comprehensive
Risk
Management

Expert group
on Slow
Onset Events

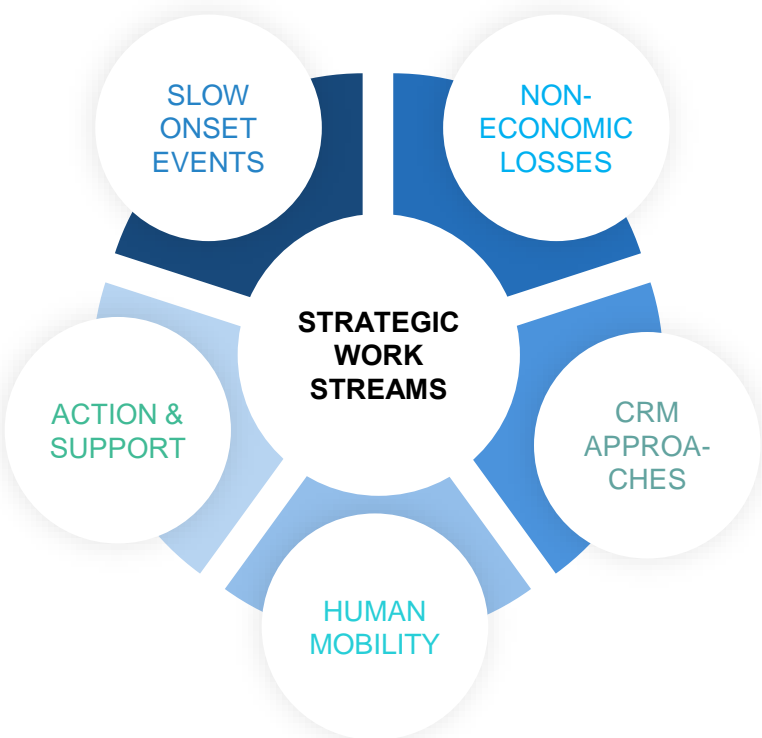
Expert group
on Non-
Economic
Losses

Expert group
on Action and
Support



Warsaw International Mechanism — Executive Committee’s areas of work

The five-year rolling workplan aims to enhance cooperation and facilitation in relation to the five strategic workstreams:



Relevant Activities:

- Engage with the scientific community, including indigenous, traditional and local knowledge holders on information and data relating to averting, minimizing and addressing loss and damage (Activity 10)
- Engage those that are at the forefront of climate change, such as women, youth, indigenous peoples, local communities and persons with disabilities (Activity 11)
- Expand knowledge of the role of traditional knowledge in averting, minimizing and addressing non-economic losses (Activity 25)



Entry points for engagements

Relevant activities under the Plan of Action of the Expert Group on Non-economic Losses

- Collect information, on a rolling basis, on good practices and lessons learned in policies and planning, action on the ground, and tools and methods for assessing non-economic losses
- Fostering existing and/or building new partnerships and otherwise cooperating with stakeholders engaged in work on non-economic
 - Submit information via a form on [the non-economic losses domain of the UNFCCC website](#) on organizations working on data, tools, awareness-raising, and technical guidance related to non-economic losses

Opportunities at COP 28

- Photography Exhibition on *Loss and Damage in Focus: 10 Years of the Warsaw International Mechanism*
- High-level event promoting engagement and reflecting on 10 years of advances and on opportunities for further work in averting, minimizing and addressing loss and damage associated with climate change impacts

ExCom 20, March 2024

- ExCom will focus on traditional and indigenous knowledge at ExCom 20 under the standing agenda item on how climate science can inform policymaking for averting, minimizing and addressing loss and damage associated with climate change impacts
-



For more information about the ExCom
<https://unfccc.int/wim-excom>

Submission for the
Photography Exhibition:
LossAndDamageInFocus@unfccc.int
loss-damage@unfccc.int

