



Artwork created by WWF-Pacific staff and partners during 2023 Pacific Week

## Pacific Challenges and Opportunities - A WWF-Pacific Case Study

Alfred Ralifo

Senior Policy and Government Affairs Manager

WWF-Pacific

MAY 2023



## Regional Challenges:

- Large Ocean States, small island development states – many remote island communities
- Climate change and biodiversity loss is accelerating at an unprecedented rate
- Increasing frequencies and intensities for climate induced disasters – cumulative impacts
- Fragmented national, regional and global policies and frameworks
- Piece-meal funding, not enough and not sustainable to support much needed LCIP driven climate action on the ground
- Cumulative impacts of multi-planetary crisis – response is still silo in approach (lack of integration, enhanced cooperation is still not enough)
- Greenwashing
- **Profit Driven Corporate Projects**

# Operationalizing the Strategic Plan

Regional Opportunities

PEOPLE AND NATURE  
POSITIVE PACIFIC



**BLUEPRINT FOR A LIVING PLANET:**  
Four Principles for Integrated Ocean-Climate Strategies

## THE PRINCIPLES



1. Raise ambition and urgently deliver stronger and sustained mitigation and adaptation actions



2. Make nature a key part of the solution



3. Put people at the centre

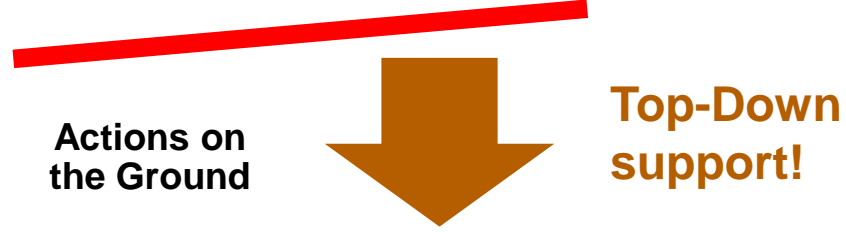


4. Join up the climate and ocean finance agendas

- Blue Pacific Continent 2050 Strategy - reinforces commitment & working together as a collective for advancing Pacific regionalism based on the Blue Pacific Narrative
- Window of Opportunity 2020 – 2030 to turn things around under the Paris Agreement, Global Biodiversity Framework, New High Seas Treaty, SDGs, and new funding opportunities to address regional challenges
- Scaling up, wide and deep lessons and best practices from the past on community led initiatives, innovations and adaptive management
- Increasing momentum for a rights, equity and inclusiveness based approach for LCIPs including the use of traditional knowledge values and practices based on FPIC
- Just transition to a fossil fuel free Pacific
- Enhanced cooperation, collaboration, peer learning, etc<sub>3</sub>

# WWF-PACIFIC SEASCAPES AND LANDSCAPES

Bottom-Up Approach | Evidence-Based Policy Intervention

**PAPUA NEW GUINEA**  
**Madang seascape** – a marine biodiversity hotspot area, with around 1,000 different species of reef fish and 700 types of corals (75% of known coral species) and large, magnificent mangrove areas.

**PAPUA NEW GUINEA**  
**Central Province** - covered with savanna, monsoon forest complex, mangroves and wetlands that support large and diverse populations of birds, corals and other species.

**PAPUA NEW GUINEA**  
**New Britain** (under consideration) - rich biodiversity and dense forest and the Nakanai range, is part of a tentative world heritage area known as the Sublime Karsts of Papua New Guinea.

**SOLOMON ISLANDS**  
**Western seascape** - diverse marine habitats amongst an island archipelago covering cloud forests to low lying atolls and terrestrial biodiversity unique to the area.

**SOLOMON ISLANDS**  
**Central Seascape** – contain coral reef areas that contain coral reef species that are less exposed to climate change, prioritized by scientists as having regenerative potential for reseeded global reefs.

**FIJI**  
**Great Sea Reef seascape** - a highly diverse, globally, regionally and nationally significant eco-region that spans an area of over 200 km<sup>2</sup> that contain coral reef species that are less exposed to climate change.

**FIJI**  
**Fiji's EEZ** – covers around 1,290,000 km<sup>2</sup> of ocean as part of its national territory and is a major regional marine migratory route for whales, tuna, turtles, sharks and rays.

**PAPUA NEW GUINEA**  
**The Kikori-Great Papuan Plateau region** - an iconic global forest landscape which covers 2.3 million ha and home to Ramsar freshwater site Lake Kutubu.

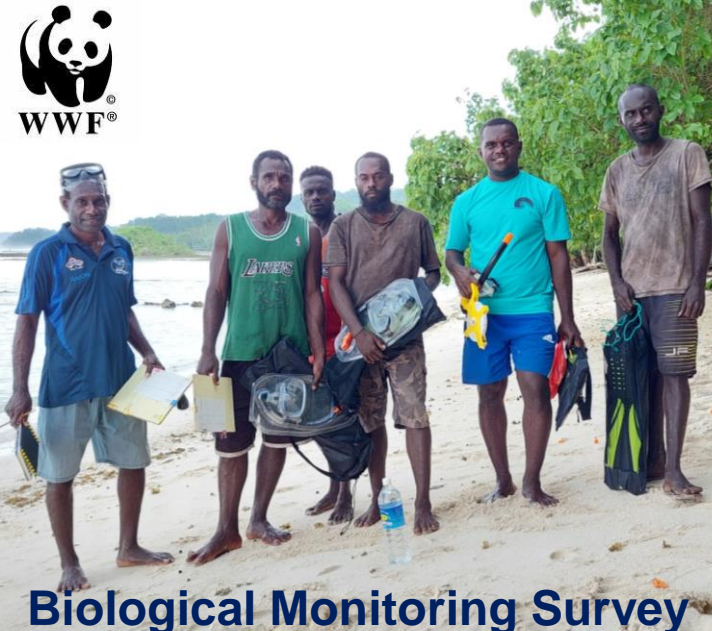


Goal 1: Empowered Pacific Peoples

Goal 2: Integrated Ocean Management

Goal 3: Climate resilient Pacific Nations





**Biological Monitoring Survey**



**Youth Engagement**



**Community Planning**



**Inclusive approach - GEDSI**

**Community Driven Nature Based Solution Sambora Community Association, Vella la Vella Island, Western Province Solomon Is**

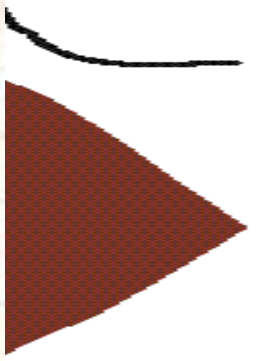
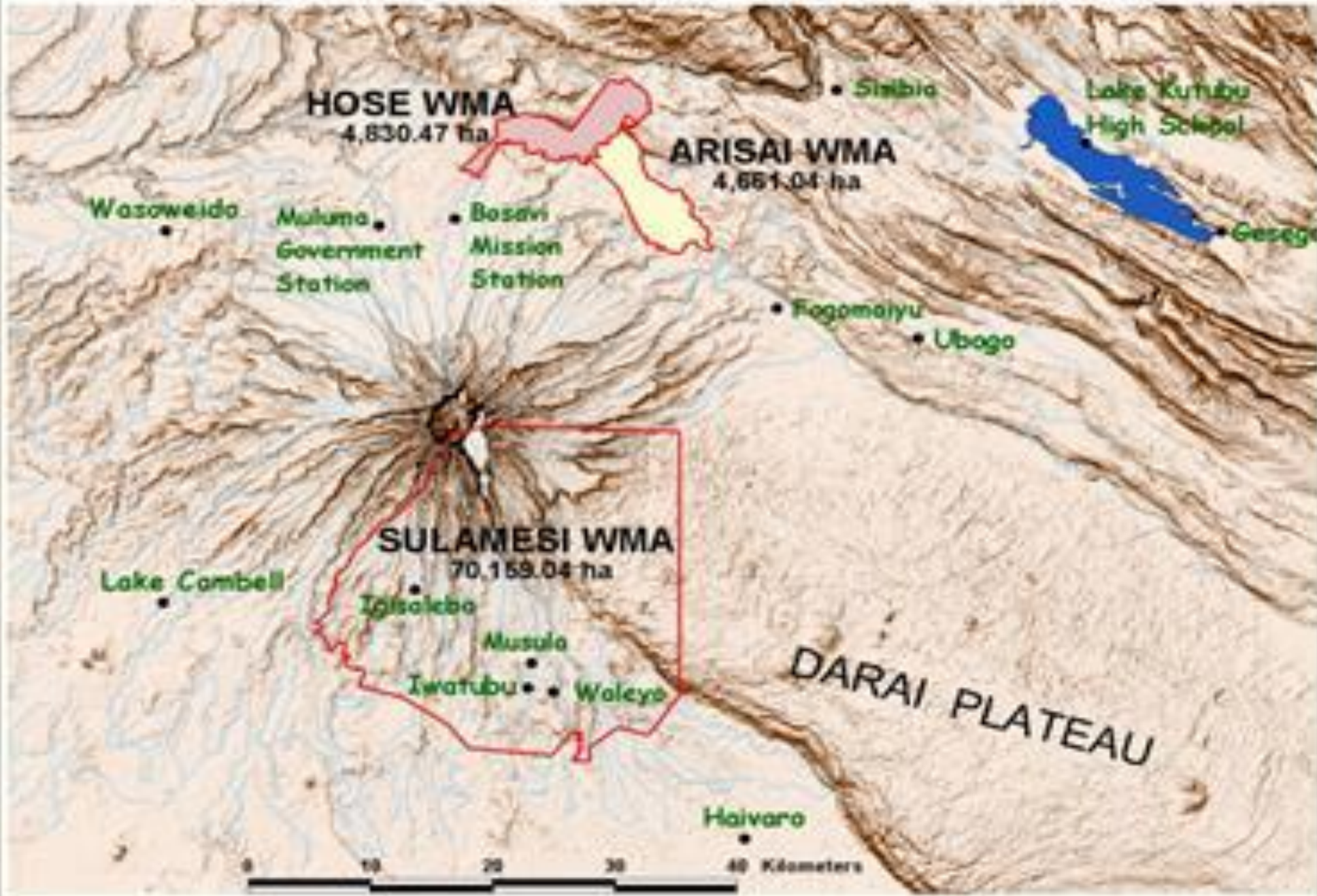
- Planting of native trees & to mitigate and protect coast line shores from sea-level rise.
- Demarcate and managing community led marine managed areas.

**What is the initiative?**

- Community Based Fisheries Managed **(CBFM)** Program.
- Replanting of **native coastal trees** to protect the coast from sea-level rise & coastal erosion.
- Planting of **native banana/ swampy taro** for food security.
- **Managing of seagrapes** (Sairagi community)

*By Immanuel Ghanny– Community Facilitator  
Sambora Community Association, Vella la Vella Island, Western Province 11<sup>th</sup> Oct 2023*

# BOSAVI WILDLIFE MANAGEMENT AREAS





**Salada, Vinaka,  
Faiakseéa, Nabolo,  
Tankyu tru!**